



KIRAN^{*}

ELITE C-ARM



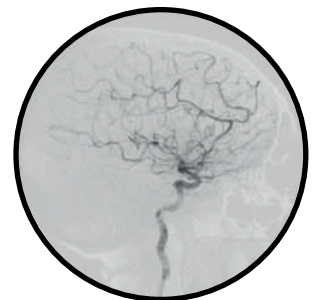
TECHNOLOGY MADE FRIENDLY

CE1639
AERB & BIS Approved



State-of-the-Art Technology

Kiran, A division of Trivitron Healthcare is a leading manufacturer of Radiology solutions with a comprehensive product portfolio covering Radiography, Mammography and Surgical C-Arm systems. With the experience of over three and a half decades in Radiation Protection Industry; we have designed Surgical C-arm Image Intensifier X-ray System with Aesthetic Look, Versatile Applications, and Robust Performance.





Functionality

- Mobility in a compact design and with an intuitive positioning
- Software modularity
- Image acquisition – processing – management – storage
- Better view and high quality imaging
- Lower dose
- Network connectivity

Software

- Last image hold and permanent storage of 100 images (Optional PC memory & digital processing software)
- Real time image rotation
- High resolution image capture
- Digital zoom
- USB memory stick support for image backup

Radiographic Mode & ABS Mode

1K x 1K Digital Imaging Chain & Memory Unit (Optional)

- More than 1 lac images storage with Digital Camera (1K x 1K resolution)
- Dicom option
- DSA with Roadmap (Optional)

Model : Elite

Output power : 5 kw

Rotating Anode X-ray Tube

Max KV : 120 kV

Monitors : High Resolution 17" (2 Nos.)

Optional item at additional cost :

- High Resolution 19" Monitors (2 Nos.)
- Single High Resolution 32" Monitor with HD memory



- Orbital Movement : 125°
- Free space : 780 mm (±10 mm)
- SID : 980 mm (±10 mm)

• 200 mm (± 10 mm) Horizontal C-Arm run, with manual brake for locking



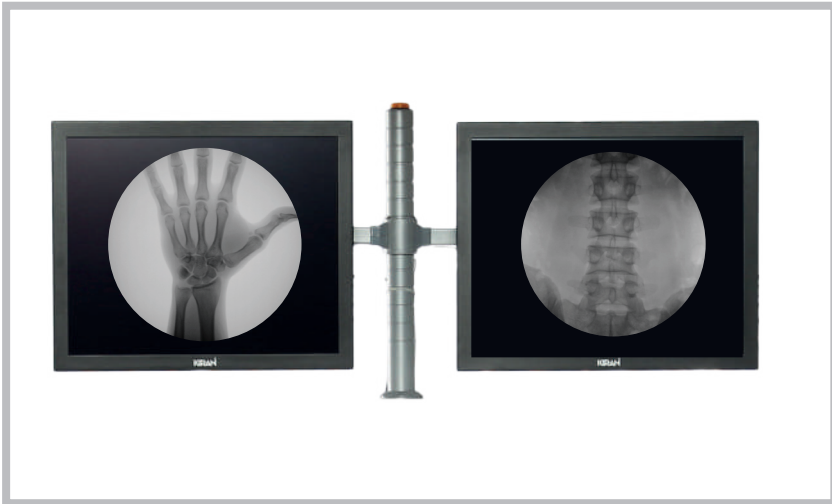
• 270° C-Arm rotation on each side, with manual brake for locking

• 12.5° (± 1°) C-Arm Swivel on each side with manual brake for locking





- Wide coverage with 9" image intensifier
- Excellent image quality – Use of 103 L / inch, 8:1 anti-scatter grid (SID=90 cm, Dia=9 inch)



- Display of live image with "Last Image Hold" feature
- Image post processing for live / stored images
- User selectable brightness, contrast for displayed images



- 40 KHz X-ray Generator / Super Harmonic Controlled frequency
- Rotating Anode



User friendly, intuitive keypad with displays with advanced features for wider clinical applications

- Pulse Fluoroscopy
- Low Dose Fluoroscopy
- Boost Fluoroscopy
- Single shot Fluoroscopy

Also has control and display for self-diagnostic maintenance and software for online support



KIRAN^{*}

D-117, 134, T.T.C.Industrial Area,
Nerul, Navi Mumbai- 400706. INDIA
Ph: +91 22 27630942, Fax: +91 22 27671790
Email id : kiran@kiranxray.com, groupmarketing@trivitron.com

www.kiranxray.com

A Division of **TRIVITRON** Healthcare

 /Trivitronindia

 /Trivitronindia

 /company/trivitron-healthcare

 /TrivitronHealthcare